

EVOLIS

USER MANUAL
EVOLIS SOLUTION & VISION

1.	SOFTWARE	4
1.1	EVOCOM/EVOGRAPH	4
1.1.1	<i>Installation</i>	4
1.1.2	<i>Presentation of the software</i>	9
1.2	EVOMOBILE	9
1.2.1	<i>Installation</i>	10
1.2.2	<i>Presentation of the software</i>	10
2.	CONNECTION TO THE RADAR SPEED SIGN	11
2.1	USB CONNECTION VIA EVOCOM	11
2.2	BLUETOOTH CONNECTION VIA EVOCOM	12
2.3	BLUETOOTH CONNECTION VIA EVOMOBILE	13
3.	SPECIFIC PROGRAMMING	15
3.1	SETTING A SPECIFIC SPEED	22
3.2	TRICOLOUR DISPLAY	23
3.3	SPY MODE	23
3.3.1	<i>Activation of spy mode via Evocom:</i>	23
3.3.2	<i>Spy mode activation via EVOMOBILE:</i>	24
3.4	FLASH MODE	25
3.5	TIME SLOTS OR SCHOOL MODE	26
3.6	ALTERNATIVE DISPLAY	27
3.7	AMBER DISPLAY ONLY	27
4.	MODIFICATION OF THE MESSAGES	28
4.1	EDITION OF A MESSAGE	29
4.2	EDITION OF AN IMAGE MESSAGE	30
5.	SUMMARY	31
5.1	EVOCOM	31
5.2	EVOMOBILE	32
6.	STATISTIC DATA	33
6.1	SETTINGS FOR ADVANCED STATISTICS MANAGEMENT FUNCTIONS	33
6.2	RECOVERY OF STATISTICS DATA	33
6.2.1	<i>Recovery of statistics data via EVOCOM</i>	33
6.2.2	<i>Recovery of statistics data via EVOMOBILE</i>	35
6.3	USE OF STATISTICS DATA	37
6.3.1	<i>Graphics visualisation</i>	37
6.3.2	<i>Average speeds</i>	39
6.3.3	<i>Maximum speeds</i>	40
6.3.4	<i>Number of vehicles</i>	40
6.3.5	<i>Speed distribution</i>	41
6.3.6	<i>Percentiles</i>	43
6.4	EVOGRAPH FUNCTIONS	43
6.4.1	<i>Dates selection</i>	43
6.4.2	<i>Printing to a PDF file</i>	44
6.4.3	<i>Export to Excel</i>	44
6.4.4	<i>Modify campaign information</i>	44
7.	CONNECT OPTION	45
8.	AFTER SALE SERVICE	45

Thank you for choosing the EVOLIS radar speed sign.

The sign will encourage drivers to slow down by displaying:

- Their speed,
- A flashing "danger" symbol for excessive speeds (optional),
- 5 (modifiable) messages according to their speed.

The system also records traffic statistics (average speeds, maximum speeds, number of vehicles, distribution by speed range and percentiles, and data for one or both traffic directions).

Our Evocom/Evograph software is used to set up the system and download the statistics via USB cable (standard), Bluetooth (standard), Smartphone (Evomobile app) and via an internet connection (Evoweb system option).

This user manual covers the following models:

Please note that depending on the model, some options may not be available. Not all versions are available in all countries.

EVOLIS SOLUTION & EVOLIS VISION



Displays speed and messages

EVOLIS MOBILITY



Displays speed but no messages.

EVOLIS XL



Displays speed in large size numbers
but no messages

EVOLIS OVER

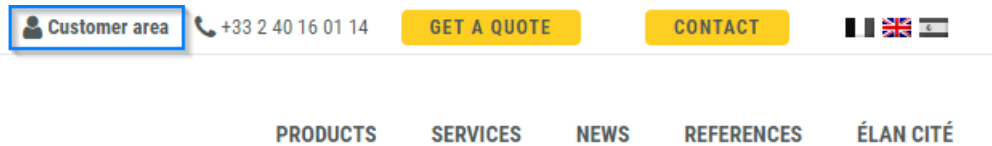


Displays messages on top and speed
below.

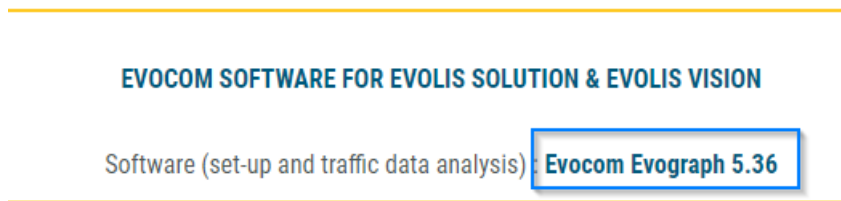
1. SOFTWARE

1.1 Evocom/Evograph

Our software and user manuals are available on our website <https://en.elancity.com/> in the “Customer area” tab



Click on the Evocom Evograph link



1.1.1 Installation

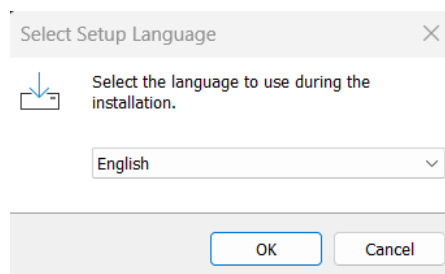
We recommend using Windows 10 or Windows 11 to install the Evocom software. As earlier versions of Windows are no longer supported by Microsoft, compatibility problems may occur.

Once the software installer has been downloaded, open the Evosetup.exe file

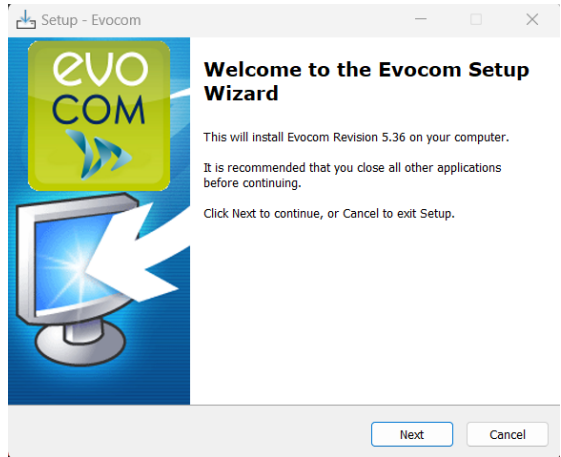


Please note that you must have administrator rights on your computer.

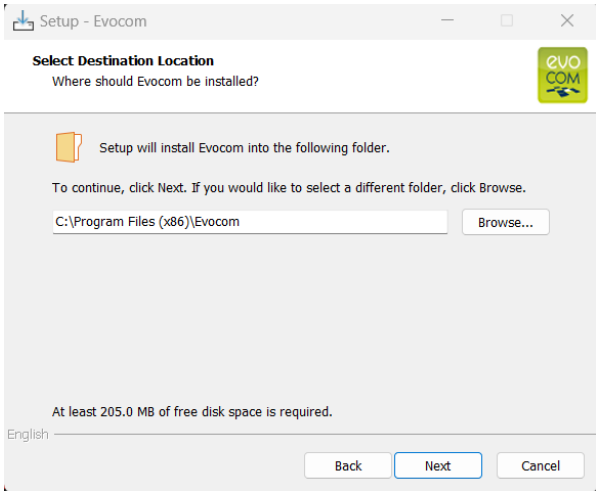
Please follow the steps below:



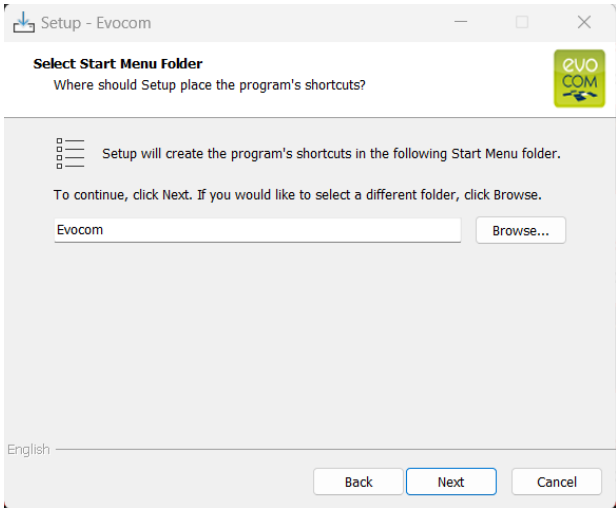
Select your language and click on “OK” to continue.



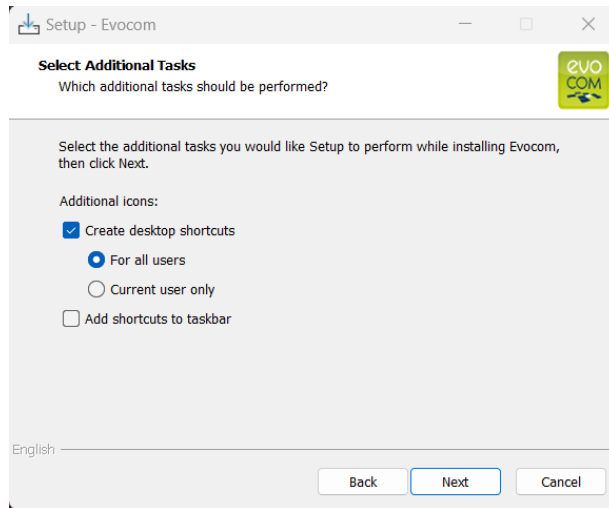
Click on "Next"



To continue, click on "Next". If you want to select a different installation location, click on "Browse".

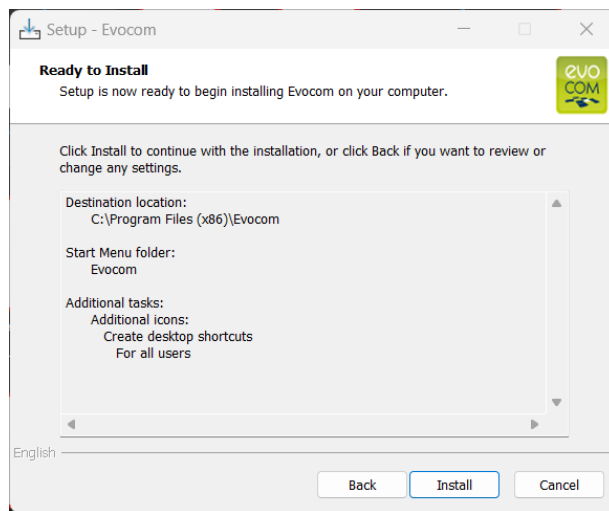


Click on "Next" to continue.
If you want to select another location to create shortcuts, click on "Browse".

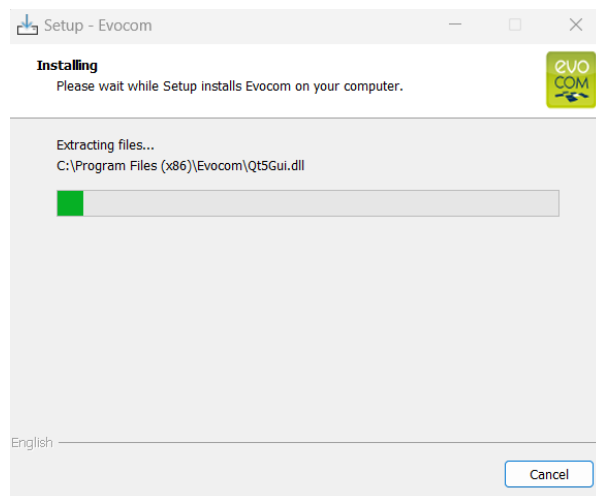


Click on “Next” to continue.

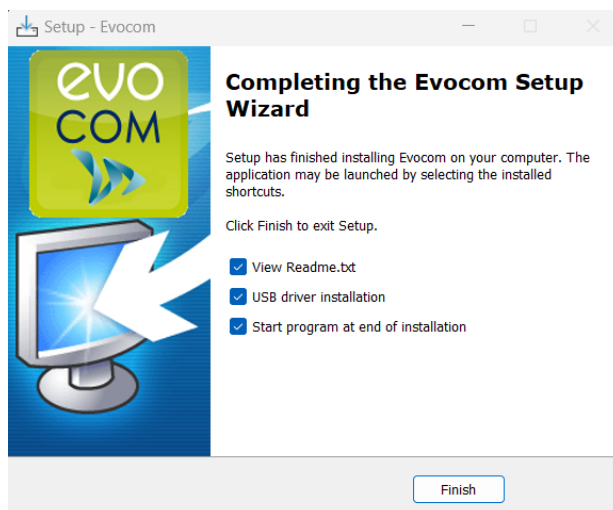
If you want to select additional installation shortcut options, click on the desired options then click on “Next”.



Click on “Install” to continue.



The software is being installed



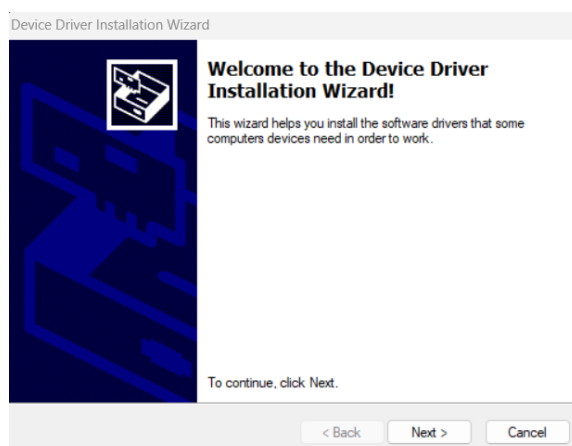
Your software is installed.
Click on "Finish" to continue.

At the end of the installation, the program will automatically start the installation of the USB and Bluetooth drivers necessary for the communication between your computer and the radar speed sign.

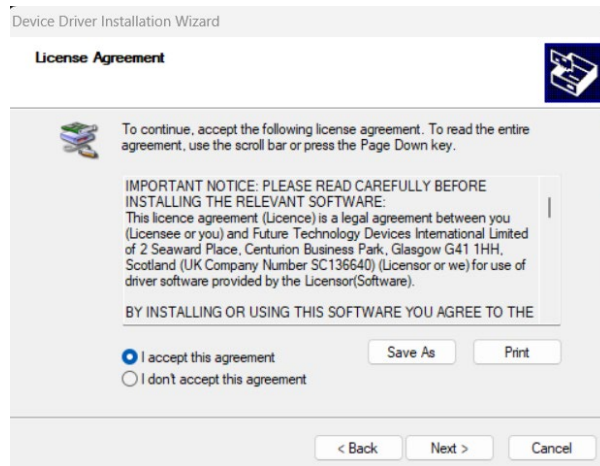
Please follow the steps below:



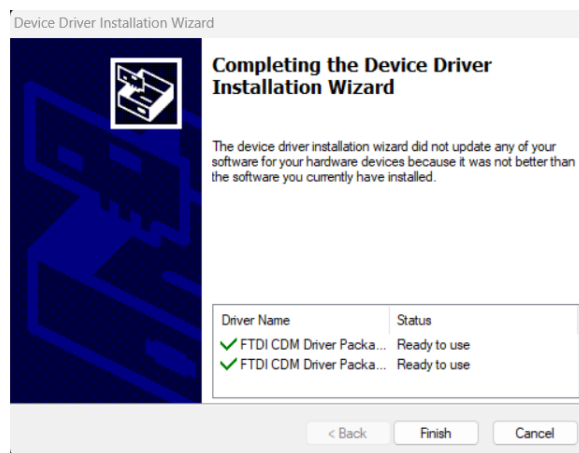
Click on "Extract" to continue



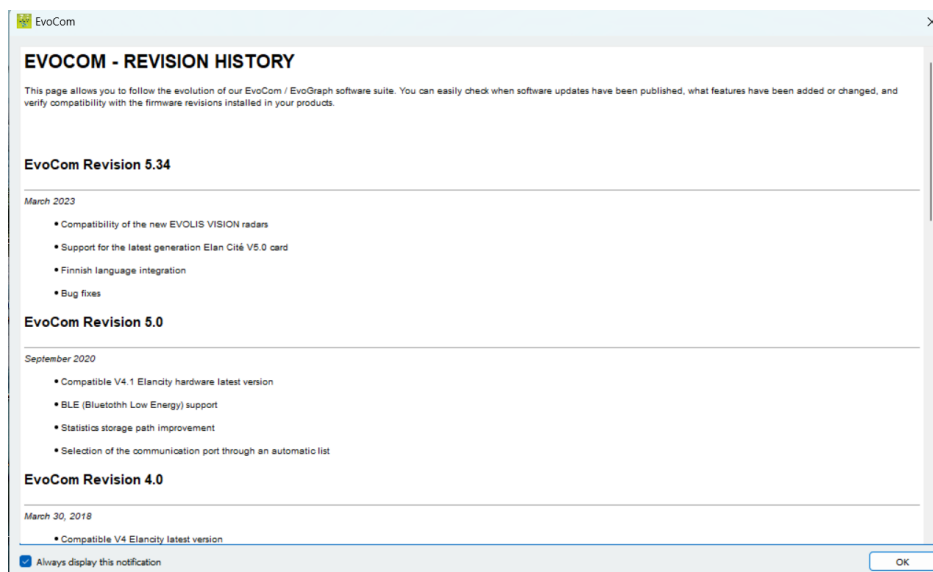
Click on "Next" to continue.



Click on “I accept the terms of this agreement” then on “Next” to continue.



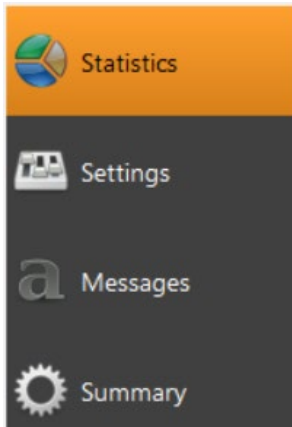
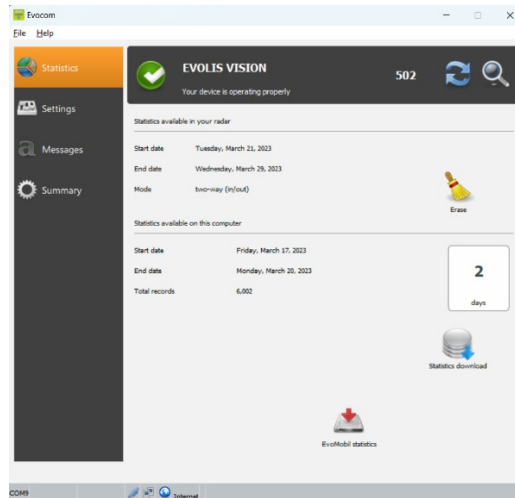
The installation of drivers is finished. Click on “Finish” to continue. Once the installation is finished, the Evocom software will start automatically



The first time the software is opened, the version history will be displayed. Uncheck the “Show on startup” box, then click on “OK” if you do not want it to be displayed the next time you start the software.

1.1.2 Presentation of the software

By default, the software presents a summary of the statistics available in your radar speed sign.



Home screen, for the management of your statistics and the connection to Evomobile.

Set-up of the "SP" position for the dial. See [section 3](#)

Set-up of the radar speed sign messages. See [section 4](#)

Summary page including all the details of your equipment.

1.2 Evomobile

The app is available from the Google Play Store and the App Store. Search for "EvoMobile" in the search bar and install the application.



[EVOMOBILE - App on Google Play](#)

[Evomobile in the App Store \(apple.com\)](#)

Minimum versions required:

- Android 5 (Smartphone)
- iOS 10 (iPad and iPhone)

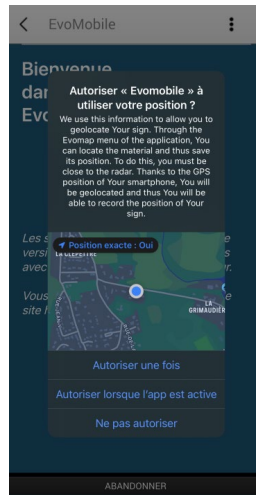
Please note that the iOS application is only compatible with radar speed signs with BLE technology, manufactured from 2021

1.2.1 Installation

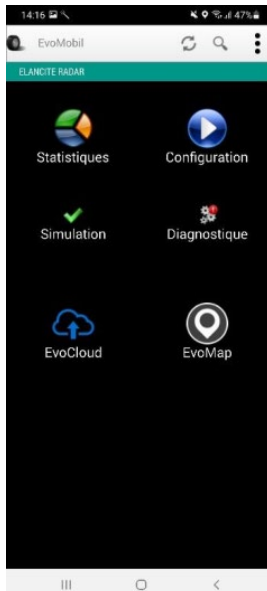
Once the application is downloaded from your store, press on:



You will then be asked for access authorisations. Make sure you accept them all:



1.2.2 Presentation of the software



- Reload the radar speed sign's parameters
- Detect a new equipment
- Display the application details.

Statistics: Retrieve the statistics stored in your radar speed sign.

Configuration: Change the name or your radar speed sign, manage the configurations, delete data, etc.

Simulation: Test the radar speed sign's active configuration.

Diagnostics: Information on the health of your radar speed sign (battery level, equipment condition, licence update, etc.).

EvoCloud (Option): Synchronise GPRS data.

EvoMap (Option): Locate your radar speed sign on a map.


2. CONNECTION TO THE RADAR SPEED SIGN

2.1 USB connection via EVOCOM

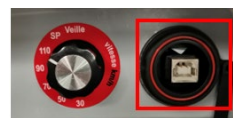
Connect your computer to the radar speed sign via the USB cable provided



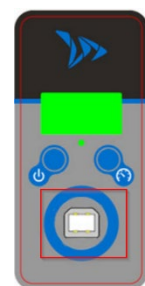
Position the speed dial on the speed of your choice on the SOLUTION model

Press and hold the  key to turn the radar speed sign "ON" on the VISION model

SOLUTION



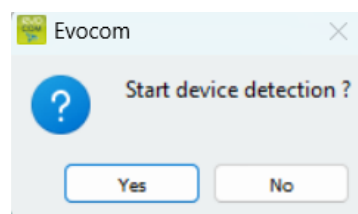
VISION



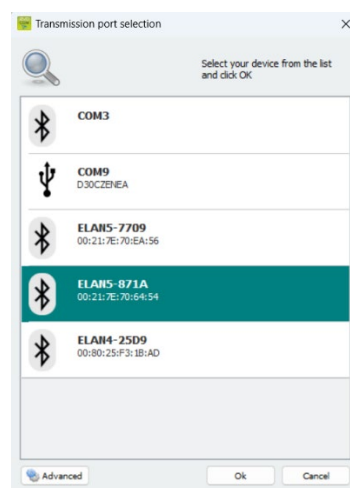
Start the Evocom program available on your desktop



Click on "yes"



A window allows you to select your product

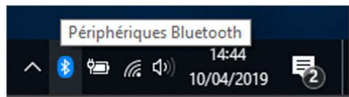


2.2 Bluetooth connection via EVOCOM

The Solution radar speed sign communicates via Bluetooth directly with your laptop (if equipped with the integrated module) or via a Bluetooth key (optional item for PC not equipped with the internal module).

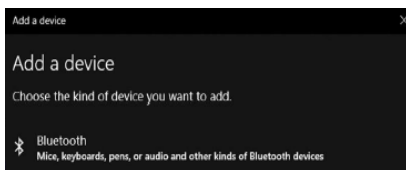
Usually, the transfer takes place in a maximum range of approximately 5 to 10 metres.

Please note, the connection may be disrupted by an athermic windscreen or weather conditions.



On the desktop of your PC, select Bluetooth and click on the icon to make sure that Bluetooth is activated

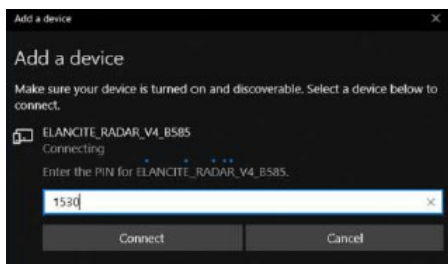
Turn the radar speed sign on and next to your computer.



Start a search for peripheral devices via the menu "Add a Peripheral". Your PC will automatically detect all the devices within its range.

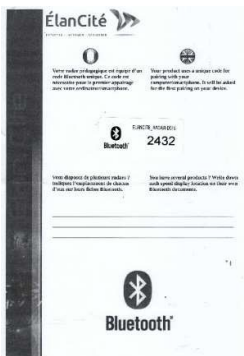
In the list, search for the device you want to connect with.

"ELANCITE_RADAR_V4_XXXX", "ELAN4-XXXX" or "ELAN5-XXXX"

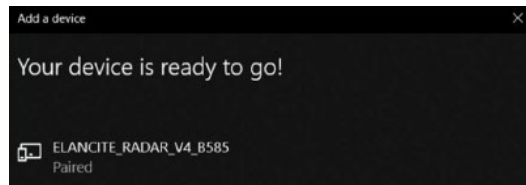


Click on "Connect". EVOCOM will ask you for the Bluetooth security code when you first connect to your equipment. The radar speed sign will then be recognised automatically.

If you are asked for a code at this step (Previous versions of radar speed signs), enter the Bluetooth code indicated in the document delivered with the manual and on the door keys.



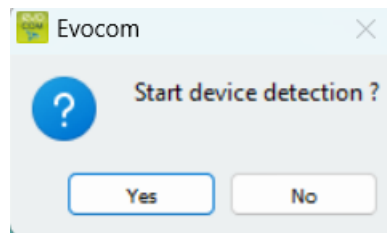
A message will indicate the operation has been successful.



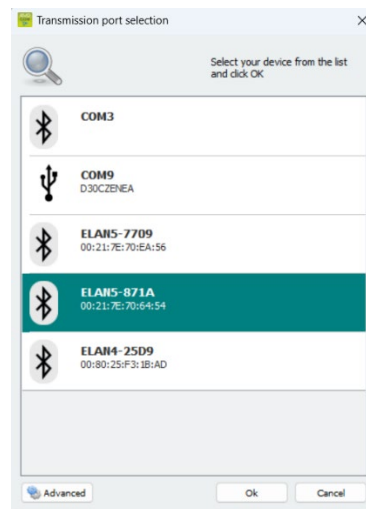
Start the Evocom program available on your desktop



Click on "yes"



A window allows you to select your product



On ELAN4_XXXX and ELAN5_XXXX models you will be asked for the Bluetooth code at this step during the first connection.

2.3 Bluetooth connection via EVOMOBILE

To connect to the radar speed sign in the best possible conditions, you must be with **10 meters** of the device.

On your Smartphone, click on the application icon:



The application will automatically search for available Bluetooth devices.



Your radar speed sign will appear with the name **“ELANCITE_RADAR_V4_XXXX”, “ELAN4-XXXX” or “ELAN5-XXXX”**

You will need the 4-digit PIN code delivered with your equipment

1. Click on your device
2. Enter the code
3. Then click on “OK”
4. The association with your equipment has been completed.



IF YOUR RADAR SPEED SIGN DOES NOT APPEAR IN THE LIST, MAKE SURE THAT BLUETOOTH IS ACTIVATED ON YOUR SMARTPHONE

3. SPECIFIC PROGRAMMING






Specific programming allows you modify the different parameters of your radar speed sign if you wish a set-up other than the one proposed on the pre-programmed positions.

! The option to activate “spy” mode is only available with the EVOMOBILE application. A computer with the EVOCOM software must be used for any other modifications.

Reminder of the pre-programmed speed positions:

EVOLIS SOLUTION :

Speed limit selector	Description	Minimum speed triggering the display	Speed triggering a colour change	Speed triggering flashing numbers	Speed triggering danger warning symbol
	Visual				
SP/ 20 km/h		15 km/h	21 km/h	26 km/h	31 km/h
30 km/h		15 km/h	31 km/h	36 km/h	41 km/h
50 km/h		15 km/h	51 km/h	56 km/h	61 km/h
70 km/h		20 km/h	71 km/h	76 km/h	91 km/h
80 km/h		20 km/h	81 km/h	86 km/h	101 km/h
90 km/h		20 km/h	91 km/h	96 km/h	111 km/h

The “SP” positions corresponds to the factory settings for the 20 km/h zone

The speed selection dial or the speed limit selector must be set to “SP” to be able to programme the different specific configuration modes defined below.

EVOLIS VISION:

Pre-programmed speed positions for Norway, Sweden, Estonia, Australia, Canada, Denmark, Poland, Greece, Croatia, Ireland and Finland.

Speed limit selector	Description	Minimum speed triggering the display	Speed triggering a colour change	Speed triggering flashing numbers	Speed triggering danger warning symbol
	Visual				
20 km/h		15 km/h	21 km/h	26 km/h	31 km/h
30 km/h		15 km/h	31 km/h	36 km/h	41 km/h
40 km/h		15 km/h	41 km/h	46 km/h	51 km/h
50 km/h		15 km/h	51 km/h	56 km/h	61 km/h
60 km/h		20 km/h	61 km/h	66 km/h	81 km/h
70 km/h		20 km/h	71 km/h	76 km/h	91 km/h
80 km/h		20 km/h	81 km/h	86 km/h	101 km/h
90 km/h		20 km/h	91 km/h	96 km/h	111 km/h
100 km/h		20 km/h	101 km/h	106 km/h	121 km/h
SP / 110 km/h		20 km/h	111 km/h	116 km/h	131 km/h

The “SP” positions corresponds to the factory settings for the 110 km/h zone

The speed selection dial or the speed limit selector must be set to “SP” to be able to programme the different specific configuration modes defined below.

EVOLIS VISION:

Pre-programmed speed positions for Mexico, Serbia, Ecuador, New Zealand, Romania and Uruguay.

Speed limit selector	Description	Minimum speed triggering the display	Speed triggering a colour change	Speed triggering flashing numbers	Speed triggering danger warning symbol
	Visual				
30 km/h		15 km/h	31 km/h	36 km/h	41 km/h
40 km/h		15 km/h	41 km/h	46 km/h	51 km/h
50 km/h		15 km/h	51 km/h	56 km/h	61 km/h
60 km/h		20 km/h	61 km/h	66 km/h	81 km/h
70 km/h		20 km/h	71 km/h	76 km/h	91 km/h
80 km/h		20 km/h	81 km/h	86 km/h	101 km/h
90 km/h		20 km/h	91 km/h	96 km/h	111 km/h
100 km/h		20 km/h	101 km/h	106 km/h	121 km/h
110 km/h		20 km/h	111 km/h	116 km/h	131 km/h
SP / 120 km/h		20 km/h	121 km/h	126 km/h	141 km/h

The “SP” positions corresponds to the factory settings for the 120 km/h zone

The speed selection dial or the speed limit selector must be set to “SP” to be able to programme the different specific configuration modes defined below.

EVOLIS VISION:

Pre-programmed speed positions for Switzerland.

Speed limit selector	Description	Minimum speed triggering the display	Speed triggering a colour change	Speed triggering flashing numbers	Speed triggering danger warning symbol
	Visual				
20 km/h		15 km/h	21 km/h	26 km/h	31 km/h
30 km/h		15 km/h	31 km/h	36 km/h	41 km/h
40 km/h		15 km/h	41 km/h	46 km/h	51 km/h
50 km/h		15 km/h	51 km/h	56 km/h	61 km/h
60 km/h		20 km/h	61 km/h	66 km/h	81 km/h
70 km/h		20 km/h	71 km/h	76 km/h	91 km/h
80 km/h		20 km/h	81 km/h	86 km/h	101 km/h
90 km/h		20 km/h	91 km/h	96 km/h	111 km/h
100 km/h		20 km/h	101 km/h	106 km/h	121 km/h
SP / 120 km/h		20 km/h	121 km/h	126 km/h	141 km/h

The “SP” positions corresponds to the factory settings for the 120 km/h zone

The speed selection dial or the speed limit selector must be set to “SP” to be able to programme the different specific configuration modes defined below.

EVOLIS VISION:

Pre-programmed speed positions for Slovakia

Speed limit selector	Description	Minimum speed triggering the display	Speed triggering a colour change	Speed triggering flashing numbers	Speed triggering danger warning symbol
	Visual				
30 km/h		15 km/h	31 km/h	36 km/h	41 km/h
40 km/h		15 km/h	41 km/h	46 km/h	51 km/h
50 km/h		15 km/h	51 km/h	56 km/h	61 km/h
60 km/h		20 km/h	61 km/h	66 km/h	81 km/h
70 km/h		20 km/h	71 km/h	76 km/h	91 km/h
80 km/h		20 km/h	81 km/h	86 km/h	101 km/h
90 km/h		20 km/h	91 km/h	96 km/h	111 km/h
100 km/h		20 km/h	101 km/h	106 km/h	121 km/h
110 km/h		20 km/h	111 km/h	116 km/h	131 km/h
SP / 130 km/h		20 km/h	131 km/h	136 km/h	151 km/h

The “SP” positions corresponds to the factory settings for the 130 km/h zone

The speed selection dial or the speed limit selector must be set to “SP” to be able to programme the different specific configuration modes defined below.

EVOLIS VISION:

Pre-programmed speed positions for Chile

Speed limit selector	Description	Minimum speed triggering the display	Speed triggering a colour change	Speed triggering flashing numbers	Speed triggering danger warning symbol
	Visual				
20 km/h		15 km/h	21 km/h	26 km/h	31 km/h
25 km/h		15 km/h	26 km/h	31 km/h	36 km/h
30 km/h		15 km/h	31 km/h	36 km/h	41 km/h
40 km/h		15 km/h	41 km/h	46 km/h	51 km/h
50 km/h		15 km/h	51 km/h	56 km/h	61 km/h
60 km/h		20 km/h	61 km/h	66 km/h	81 km/h
70 km/h		20 km/h	71 km/h	76 km/h	91 km/h
80 km/h		20 km/h	81 km/h	86 km/h	101 km/h
100 km/h		20 km/h	101 km/h	106 km/h	121 km/h
SP / 120 km/h		20 km/h	121 km/h	126 km/h	141 km/h

The “SP” positions corresponds to the factory settings for the 120 km/h zone

The speed selection dial or the speed limit selector must be set to “SP” to be able to programme the different specific configuration modes defined below.

EVOLIS VISION:

Pre-programmed speed positions for Bulgaria

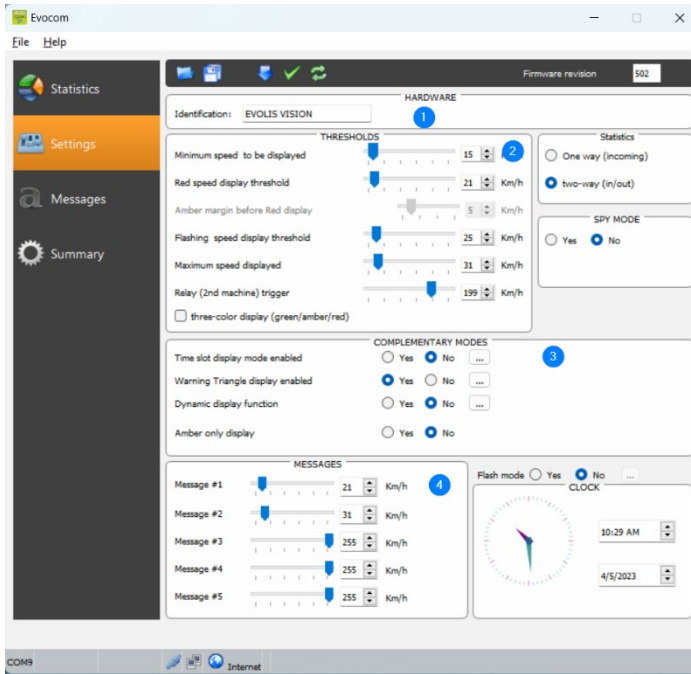
Speed limit selector	Description	Minimum speed triggering the display	Speed triggering a colour change	Speed triggering flashing numbers	Speed triggering danger warning symbol
	Visual				
20 km/h		15 km/h	21 km/h	26 km/h	31 km/h
30 km/h		15 km/h	31 km/h	36 km/h	41 km/h
40 km/h		15 km/h	41 km/h	46 km/h	51 km/h
50 km/h		15 km/h	51 km/h	56 km/h	61 km/h
60 km/h		20 km/h	61 km/h	66 km/h	81 km/h
70 km/h		20 km/h	71 km/h	76 km/h	91 km/h
80 km/h		20 km/h	81 km/h	86 km/h	101 km/h
90 km/h		20 km/h	91 km/h	96 km/h	111 km/h
120 km/h		20 km/h	121 km/h	126 km/h	141 km/h
SP / 140 km/h		20 km/h	141 km/h	146 km/h	161 km/h

The “SP” positions corresponds to the factory settings for the 140 km/h zone

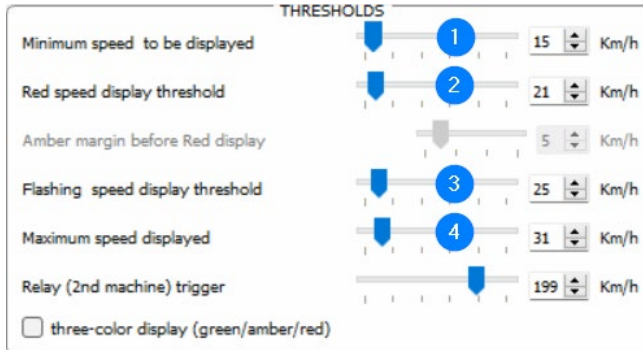
The speed selection dial or the speed limit selector must be set to “SP” to be able to programme the different specific configuration modes defined below.

3.1 Setting a specific speed

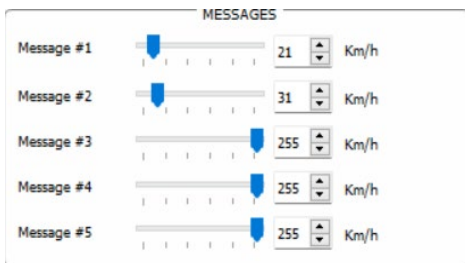
Once connected to the radar speed sign via EVOCOM, click on the Settings tab



1. Change the name of the radar speed sign
2. Change the different thresholds to change the speed colour
3. Activate the different specific modes, see below
4. Change the different thresholds to display messages



1. Threshold from which the radar speed sign displays a message
2. Threshold to change the speed display to red
3. Threshold to trigger flashing of the speed display
4. Threshold to display "DANGER" (anti-race mode)



Settings to trigger the messages display.

In this example, message 1 is triggered from 21km/h, until message 2 is triggered from 31 km/h

Once the settings are changed, click on the button  to load the settings in the radar speed sign.

3.2 Tricolour display

3 colour display: (this mode is deactivated in the factory set-up).

Green	For speeds below the speed limit
Amber	For speeds close to the speed limit
Red	For speeds above the speed limit

Once connected to the radar speed sign via EVOCOM, click on the Settings tab

THRESHOLDS

Minimum speed to be displayed: 15 Km/h

Red speed display threshold: 21 Km/h

Amber margin before Red display: 5 Km/h

Flashing speed display threshold: 25 Km/h

Maximum speed displayed: 31 Km/h

Relay (2nd machine) trigger: 199 Km/h


three-color display (green/amber/red)

Check the “three colour display” box

Set the threshold before the display changes to red

Display in amber = Speed triggering a colour change - warning threshold before display changes to red.

In this example, display in amber from 16 km/h to 21 km/h

Once the settings are changed, click on the button  to load the settings in the radar speed sign.

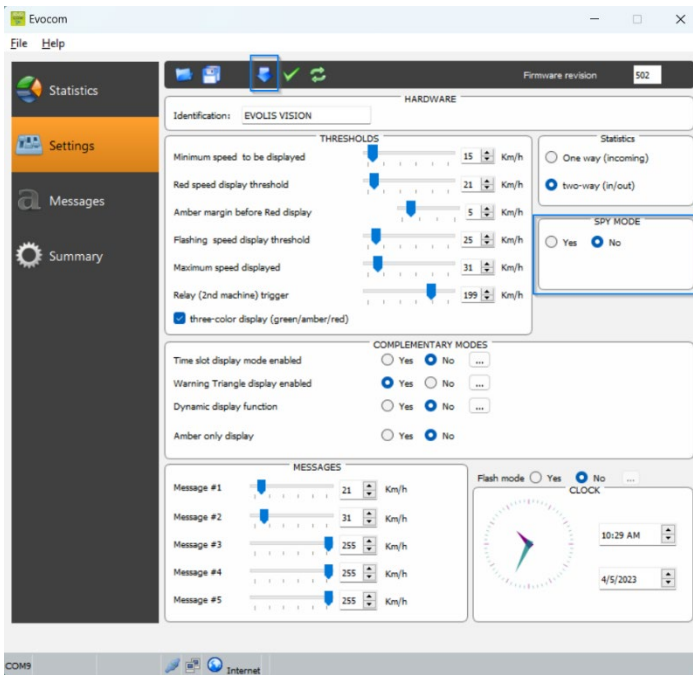
3.3 Spy mode

The “Spy” option allows you to deactivate the speeds and messages display while recording the traffic data.


This option can be activated either by the EVOCOM software or by the EVOMOBILE application

3.3.1 Activation of spy mode via Evocom:

Once connected to the radar speed sign via EVOCOM, click on the Settings tab then select “Yes” in the “SPY” zone

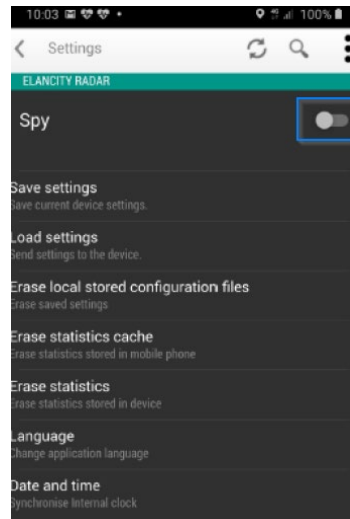
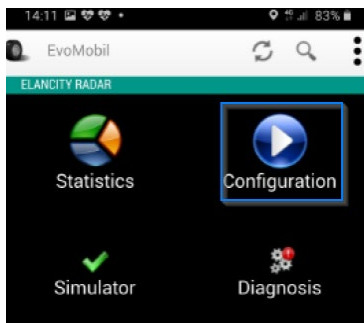


Once connected to the sign via EVOCOM on the Settings tab then click on SPY mode “YES”

Once the settings are changed, click on the button  to load the settings in the radar speed sign.

3.3.2 Spy mode activation via EVOMOBILE:

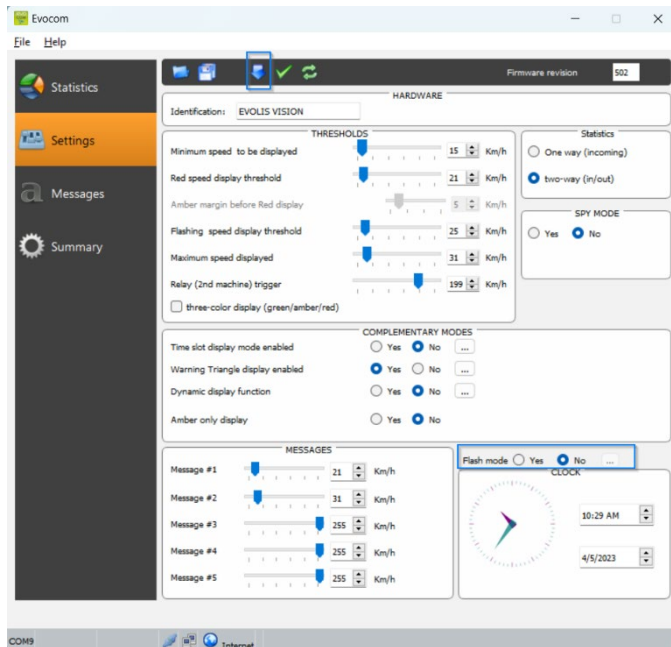
Once connected to the radar speed sign via EVOMOBILE on the Settings tab then click on the “SPY” button



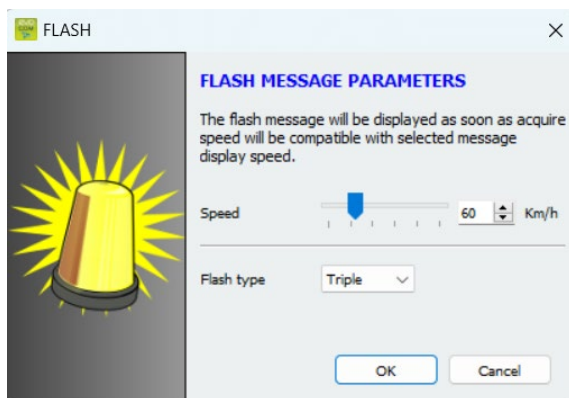
3.4 Flash mode

The “FLASH” option allows you to activate a flashing light when a vehicle exceeds the programmed speed limit.

Activation of flash mode via Evocom:



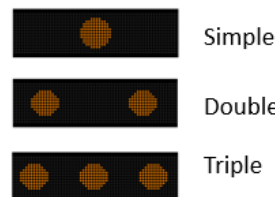
Once connected to the radar speed sign via EVOCOM, click on the Settings tab then select “YES” in the “FLASH mode” zone



Select the desired triggering speed

Please note, for example, to trigger above 50 km/h, enter 51 km/h

Select your type of flash:

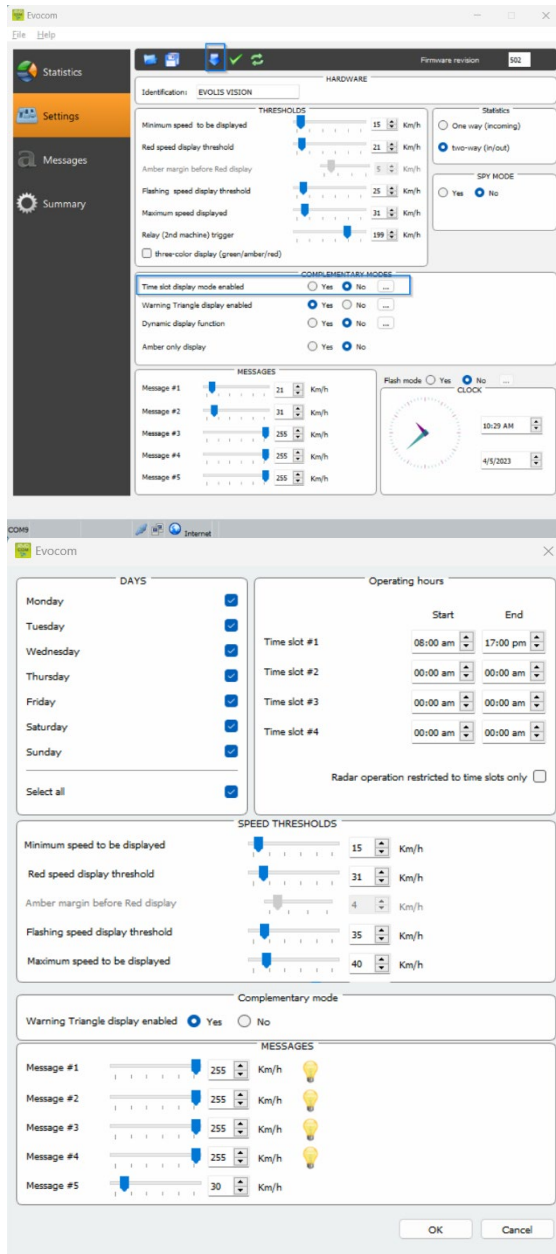


Once the settings are changed, click on the button  to load the settings in the radar speed sign.

3.5 Time slots or school mode

The “Time slot display” option allows your radar speed sign to be programmed differently depending on the day and operating hours.

Activation of “Time slots display” mode:



Once connected to the radar speed sign via EVOCOM, click on the Settings tab then click on “YES” in the “Time slot display” zone

Enter the settings for the desired days and operating hours

Set the different thresholds for the speed display and the messages then click on “OK”

Only the diffusion of Message 5 is activated during the selected periods.

By default, message 5 is the caution school message. In can be modified in the “message” tab



Outside the selected time slots, the radar speed sign will operate as per the “SP” mode settings, unless the “Radar operation restricted to these time slots” box is checked. The sign will then be in “STANDBY” mode outside of the time slots.

Once the setting is changed, click on the button  to load the settings in the sign.

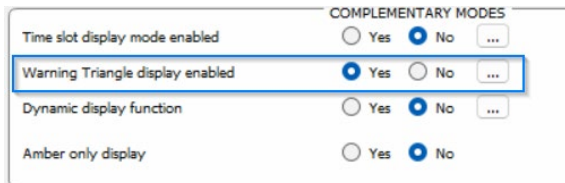
3.6 Alternative display

This setting, activated by default, allows you to display a “DANGER” warning triangle:

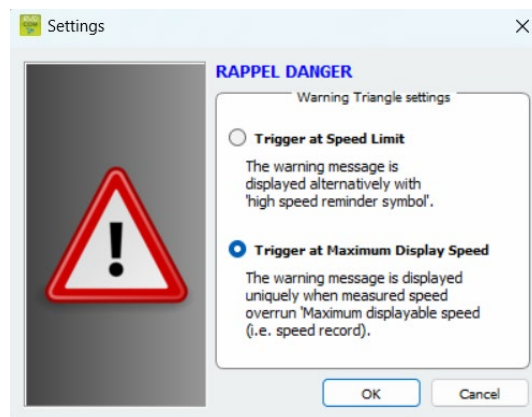


- Either intermittently, with the detected speed, from the speed triggering the danger warning symbol
- Or permanently displayed (which replaces the speed display) from the speed triggering the danger warning symbol

The command to activate this function is in the same “Complementary mode” dialogue box



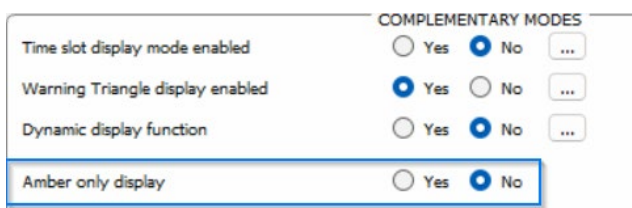
Click on “yes” to activate the alternative display, then select the operating mode required



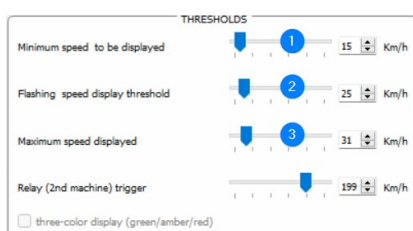
3.7 Amber display only

Once activated, this function forces the speed display to amber

The command to activate this function is in the same “Complementary mode” dialogue box



Once activated, the speed thresholds modification panel will be modified:



1. Threshold from which the radar speed sign displays a message
2. Threshold to trigger flashing of the speed display
3. Threshold to display “DANGER” (anti-race mode)

4. MODIFICATION OF THE MESSAGES



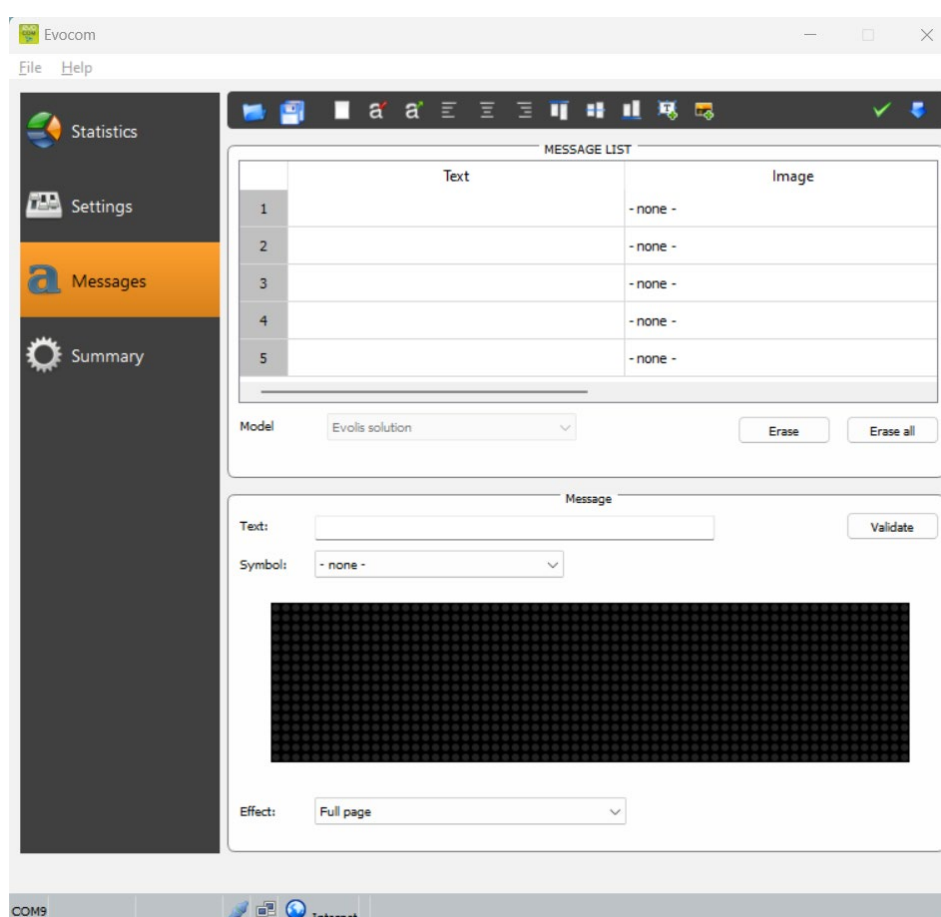
To modify your default messages, connect to the radar speed sign via EVOCOM and click on the “Messages” tab



Please note that this modification impacts all modes of your radar speed sign

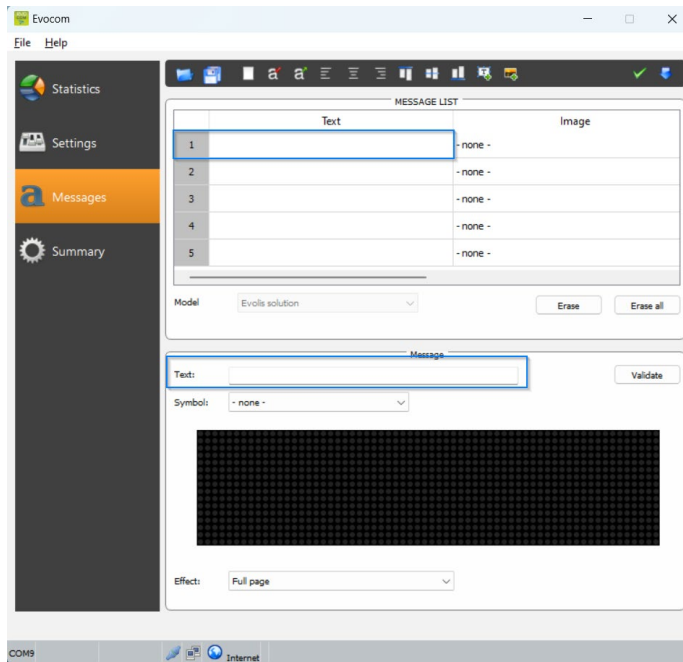
The use of an amber “full graphic 64 x 16 cm (l x h) matrix. Pitch (gap between the centre of each LED): 10 mm **Offers a wide choice of message formats**, with the possibility of writing two lines of text.

This allows you to enter 5 messages (text or image) displayed automatically depending on the speed.



The messages, saved in the Evolis memory, are not visible on the Evocom interface. To display the existing messages on the device, click on () to launch test mode.

4.1 Edition of a message




Click on the message you want to change

In the text field, enter the message you want to display. It is automatically simulated in the matrix using the resolution of the Evolis LED matrix.

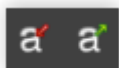
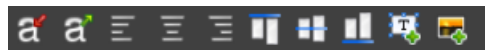


You can choose to display the messages on one or two lines by increasing/reducing the size of the characters.

With the icon  you can choose the type and size of the font.

Then click on the “Send” button . A progress bar will indicate the transfer status and completion.

Legend for other message setting icons



Reduce/enlarge the size of characters proportionally

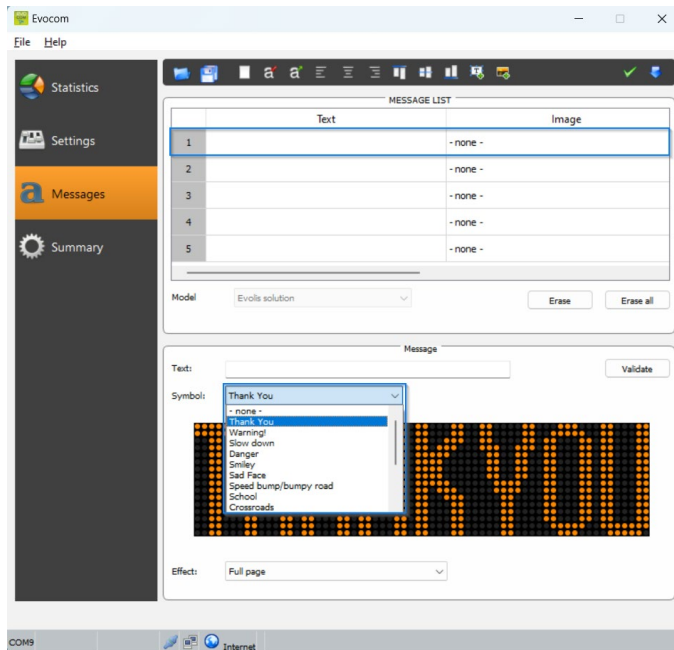


Centring or left/right alignment



Vertical centring or top/bottom alignment

4.2 Edition of an image message




Click on the message you want to change

In the “Symbol” drop down menu, select the desired image for message 1. You can enhance the library by importing your own


icon using the icon . (Format Paint BMP monochrome 64*16)

Once the message is written and set up, click on “Validate”.

Do the same for messages 2, 3, 4 and 5, if needed.

Then click on the “Send” button . A progress bar will indicate the transfer status and completion.



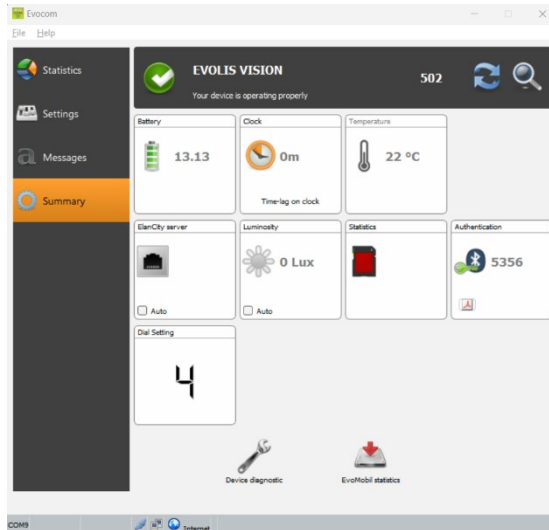
You can save your messages and the associated settings using the “save” button .

This function only concerns your text message settings.

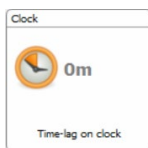
It is possible to go back to the original set-up for your messages by clicking on “Erase all”.

5. SUMMARY

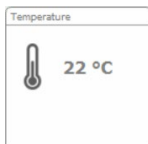
5.1 EVOCOM



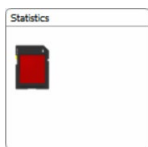
Battery level indication. If the battery level is low, the icon changes colour. A fully charged battery is between 12.8 V and 13.1 V



This icon indicates the time drift between the radar speed sign and the computer. A simple click will allow you to synchronise the times of the radar speed sign and the computer.



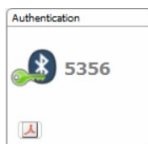
Radar speed sign internal temperature. (Please note, the indicated temperature is the one inside the sign and not the ambient temperature)



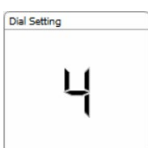
Number of days of statistics in the radar speed sign's memory.



Ambient luminosity indication. Click on the icon to obtain the measurement.

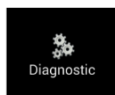


Bluetooth code associated with your device. It is possible to print the authentication form by clicking on the icon

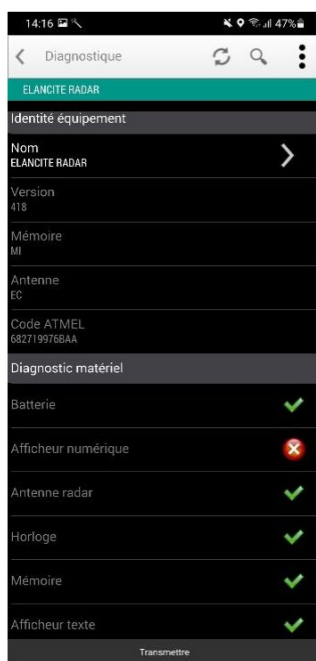


Position of the speed thresholds dial

5.2 EVOMOBILE



In this part, it is possible to modify the product name and check its health. In the event of a problem, useful diagnostic information is displayed. Licence information is available at the bottom of the window.



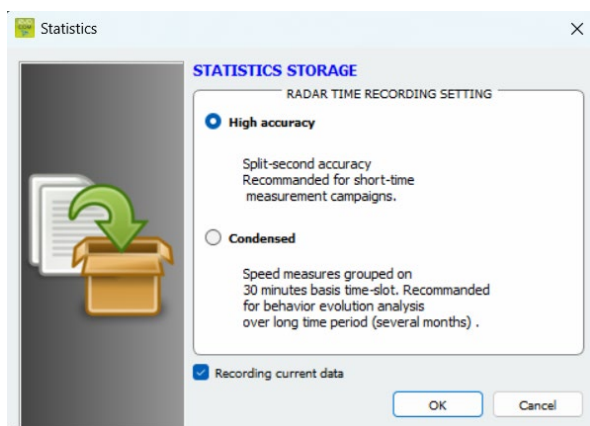
6. STATISTIC DATA



6.1 Settings for advanced statistics management functions

In the case of a one-off measurement campaign (mobile radar), you can record to the second, the time of each measurement by selecting the high accuracy mode in the statistics storage menu.

To activate this mode, press the CTRL +M keys when you are connected to the radar speed sign from EVOCOM



Click on “High Accuracy Mode” then OK to activate the mode

Please note that changing from one storage mode to the other deletes the radar speed sign’s statistic data. The use of statistics is described in [section 6.4.3](#).



Evolis is configured to operate in condensed mode by default.

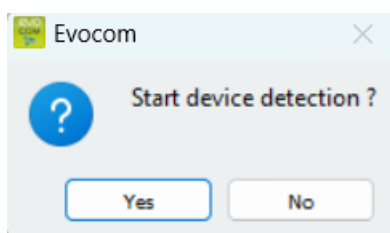
6.2 Recovery of statistics data

6.2.1 Recovery of statistics data via EVOCOM

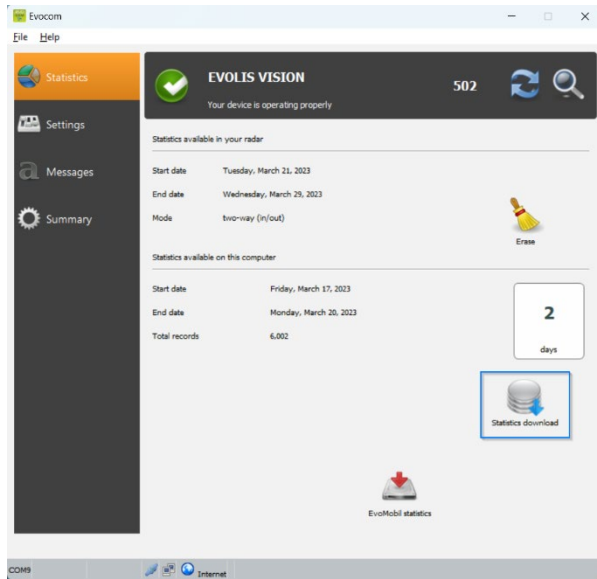
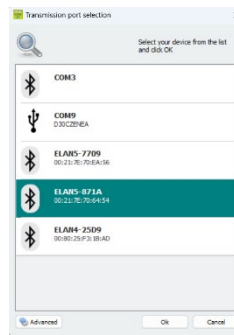
Once your computer is connected to the radar speed sign by USB or Bluetooth, start the Evocom program available on your desktop



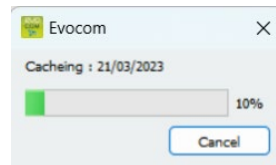
Click on “yes”



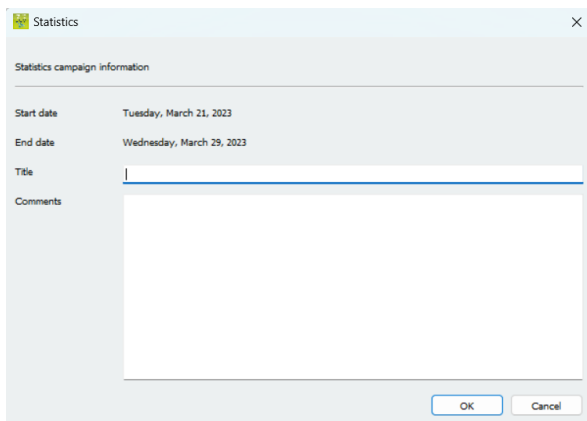
A window allows you to select your product



Click on the "statistics download" button



A progress bar appears

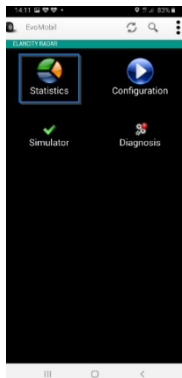


Once loading is completed, a window with the measurement campaign information appears. You can name your measurement campaign and add a description.

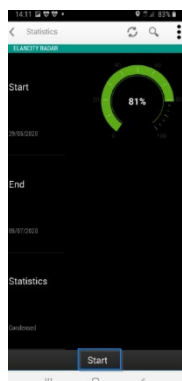
Once the statistics are downloaded, you can consult them using the Evograph software

6.2.2 Recovery of statistics data via EVOMOBILE

Once your telephone is connected to the radar speed sign via Bluetooth



Press the “statistics” button



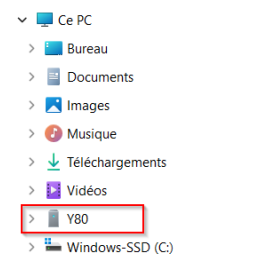
Press the Start button to start downloading the statistics

Once the download is complete, and in order to use your statistics in EVOGRAPH, connect your telephone to a computer with the EVOCOM/EVOGRAPH software already installed.

Go to Windows file explorer



Click on your device in the list of connected devices



Click on “Internal storage space” or “internal memory” depending on the Smartphone model



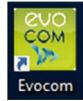
Select the “Documents” folder then “Evocom” then “stats”



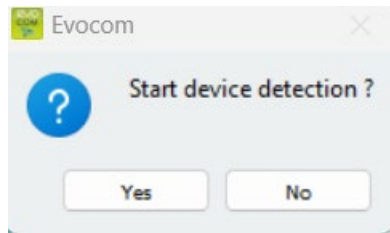
Select the statistics file “. DBZ1” corresponding to your radar speed sign and copy it on your desktop with a “right click”.



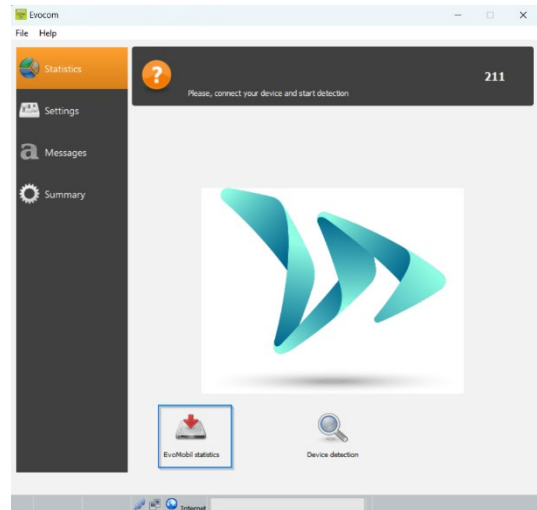
In EVOCOM:



Click on “No”



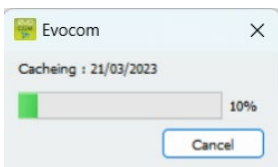
1. In the “statistics” tab, click on “EVOMOBILE STATISTICS”
2. Click on your desktop
3. Select the previously copied “.DBZ1” statistics file.



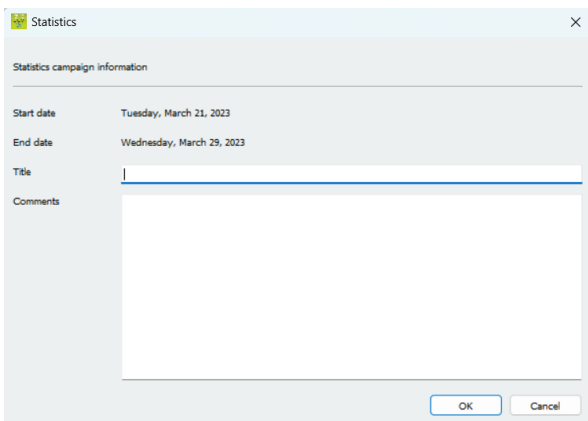
The statistics will be integrated directly into your existing statistics as a campaign.
If you change the name of your radar speed sign, a new statistics file will be created.

We recommend that you clear your the telephone’s memory regularly to avoid accumulating too many “DBZ1” files.

To do this, use the “CLEAR STATISTICS CACHE” function in the “SETTINGS” menu of the EVOMOBILE software



A progress bar appears



Once loading is completed, a window with the measurement campaign information appears. You can name your measurement campaign and add a description.

Once the statistics are downloaded, you can consult them using the Evograph software.

6.3 Use of statistics data

The “Evograph” interface will allow you analyse the radar speed sign data.

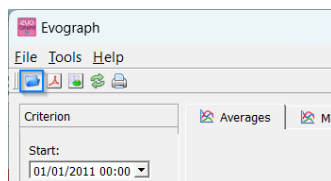
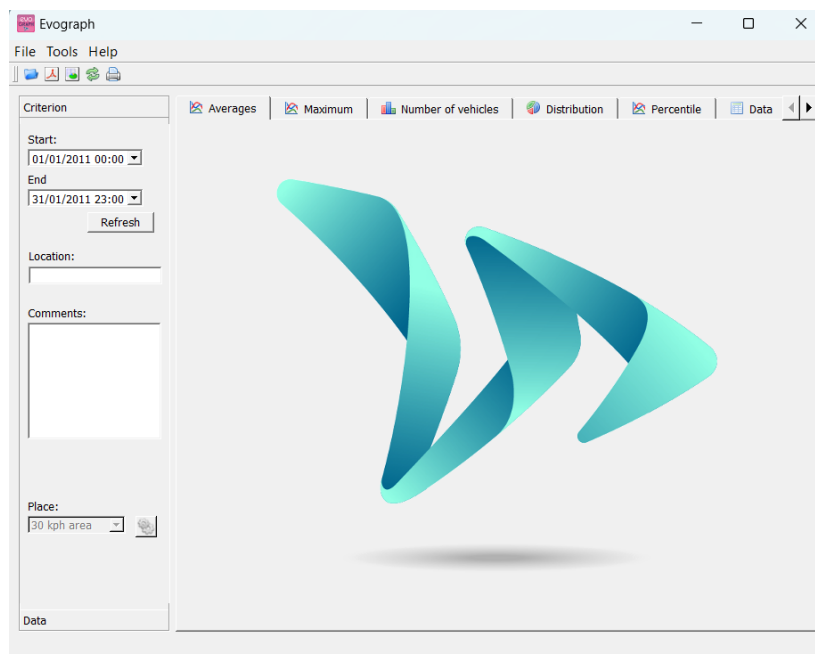
The “Evograph” software analyses this data and generates the complete reports of the collected data, in PDF or Excel format, in just a few clicks

6.3.1 Graphics visualisation

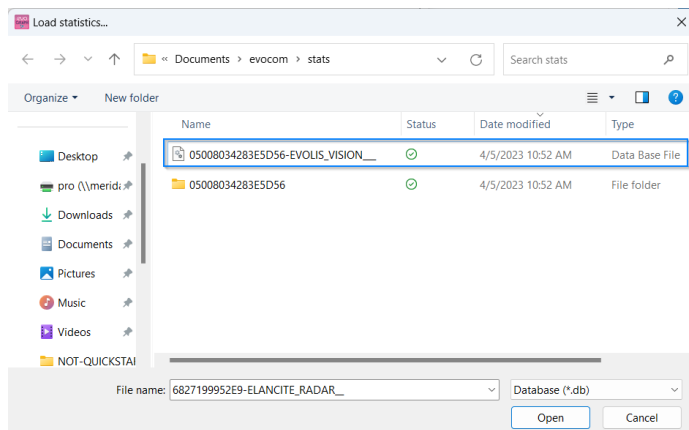
Open the Evograph software



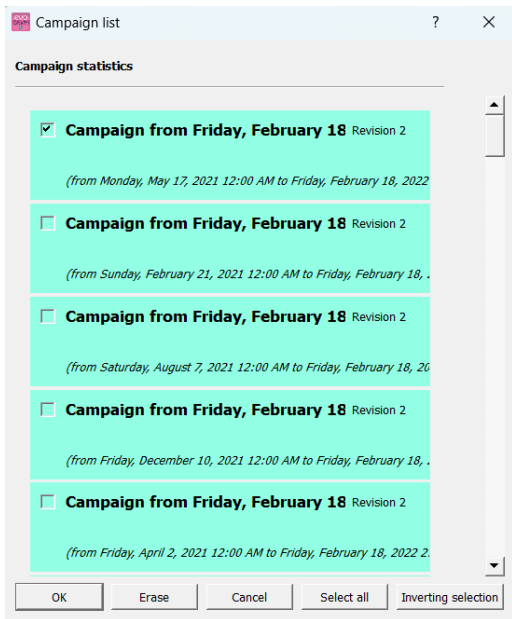
Home page:



Click on this icon to open the statistics file to process



Select the file corresponding to your radar speed sign



A window will allow you to visualise all the campaigns available in the database.

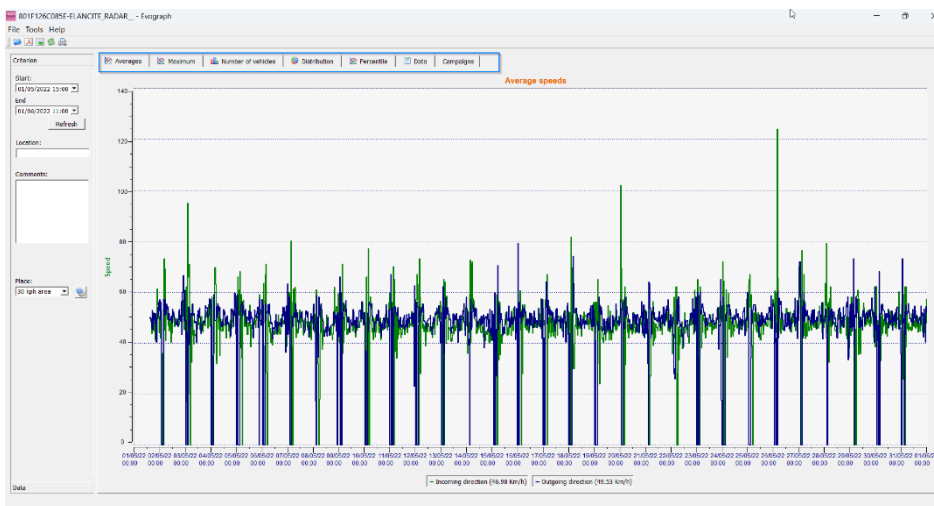
You can choose one or several consecutive campaigns. You can also delete a campaign.

Click on OK to start loading the campaign

Your statistics can now be used.

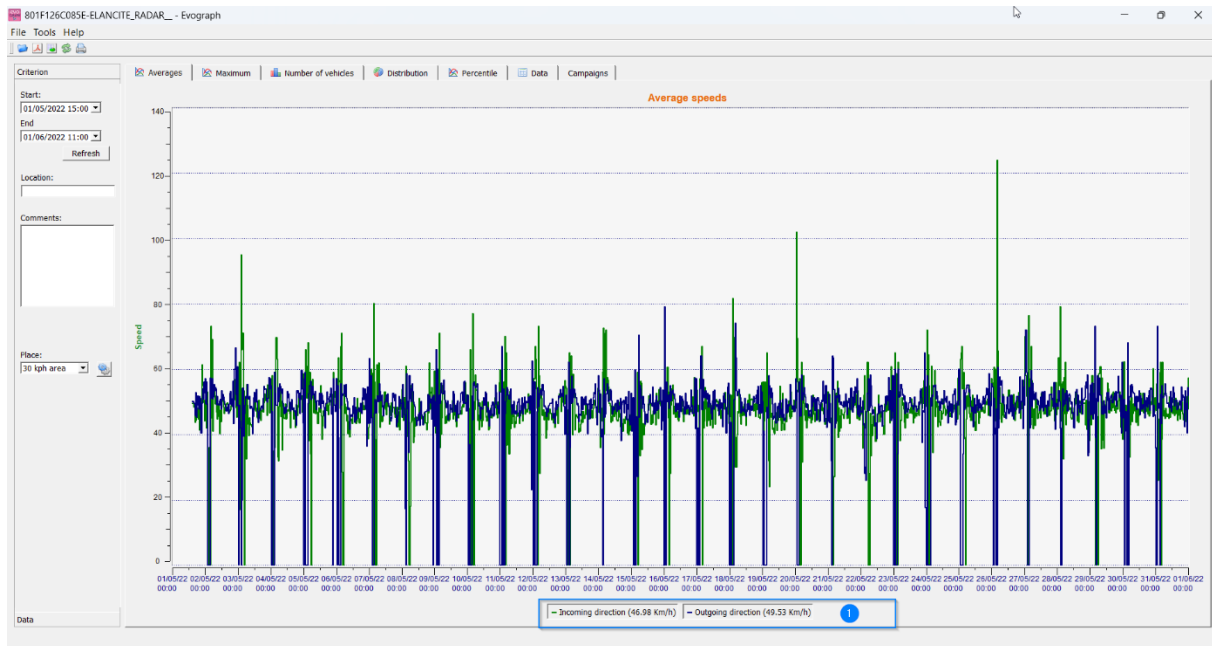
The software will propose different graphics and analysis:

- Evolution of the average and maximum speeds
- Evolution of the number of vehicles
- Distribution of the number of vehicles per speed range
- Percentiles
- Synthesis of the data



Simply navigate between the different tabs to visualise the graphs.

6.3.2 Average speeds



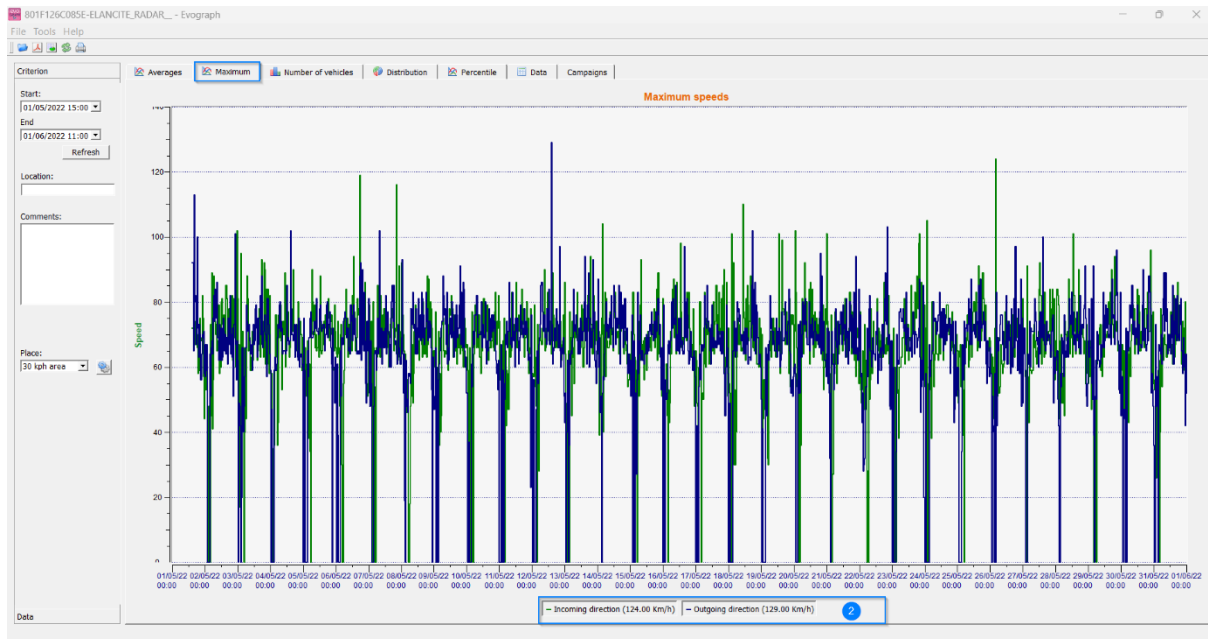
The average speeds graph includes two averages:

- An average by half-hour period displayed as a curve on the graph (one curve per speed direction)
- One general average which is displayed in the lower part of the graph ((1) legend).

The average by half-hour period corresponds to the arithmetic average calculated on speeds between start / end dates and grouped over a default time period of 30 minutes.

The general speed corresponds to the arithmetic average of all speeds between the start / end dates over the time period used. The software sums all the instant speeds then divides the result by the number of measurements.

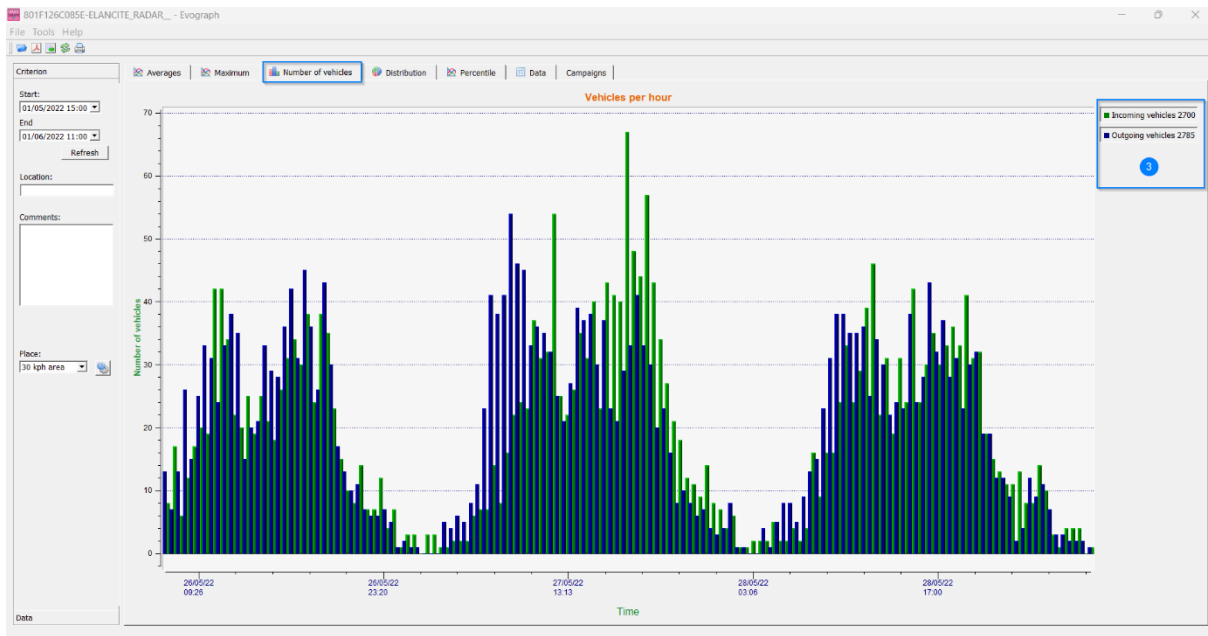
6.3.3 Maximum speeds



In the same way, the maximum speeds graph is divided into two parts:

- The maximum speed recorded by half-hour period is shown on the graphs (always with one colour per traffic direction).
- The maximum speed recorded over the entire period selected, presented in legend (2).

6.3.4 Number of vehicles



The number of vehicles graph allows you to analyse:

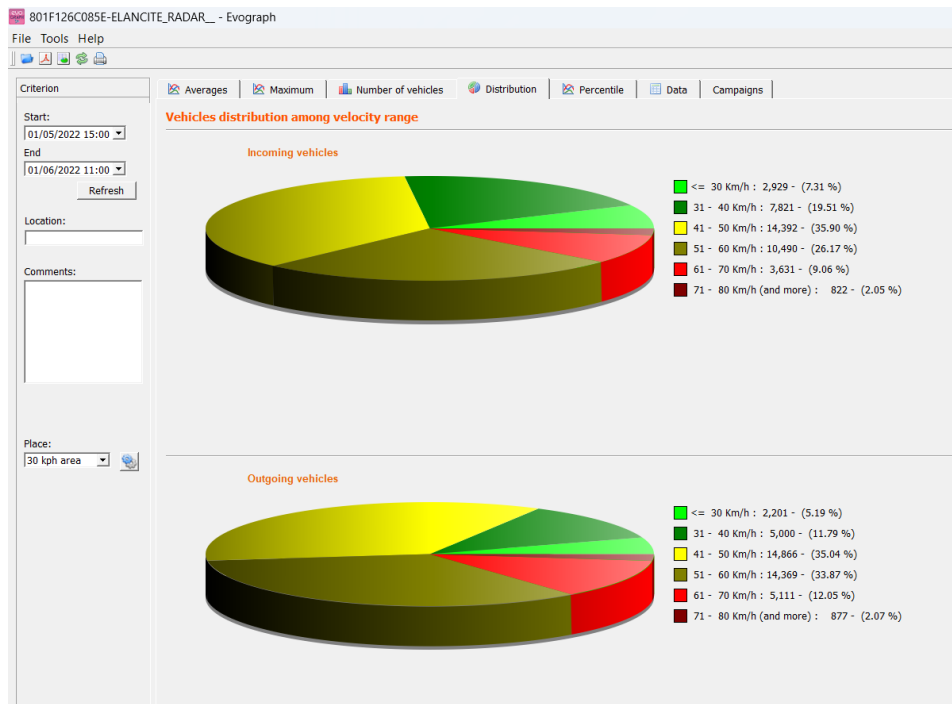
- The number of vehicles in the entering or exiting direction, per half-hour time period
- The total number of vehicles over the selected period (3).

6.3.5 Speed distribution

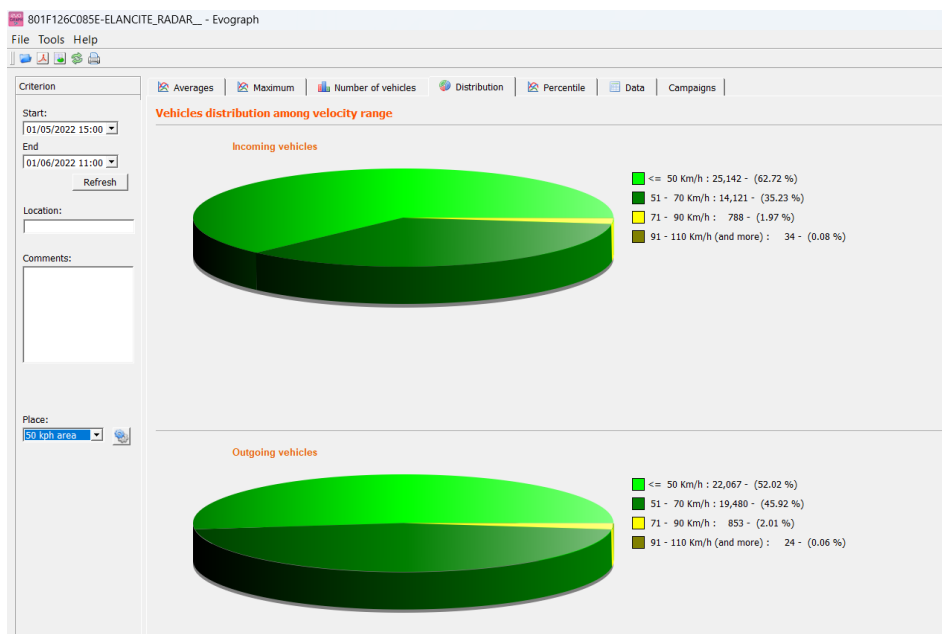
The distribution of speed ranges provides an overview of the percentage of vehicles that comply or do not comply with the regulations in force.


The “Location” options allows you to refine the ranges that will be displayed in the final report.

Graph with location selected at 30 km/h:

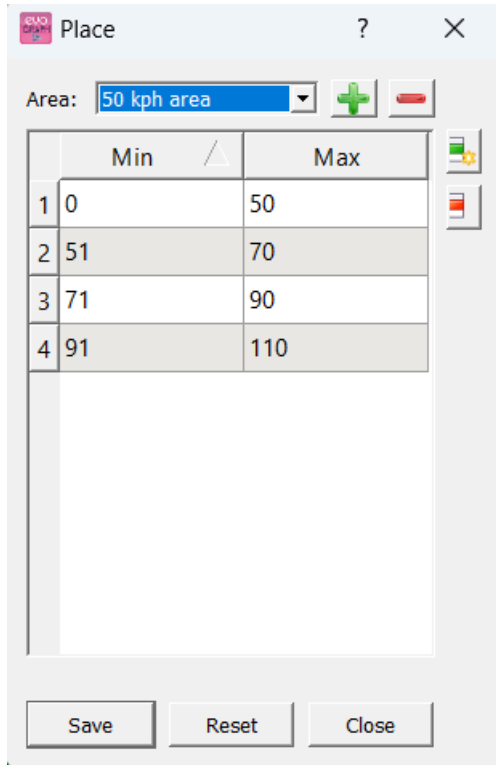


Graph with location selected at 50 km/h:



By selecting the icon , you can customise the number of speed zones to be displayed depending on the location.

Icons legend



The screenshot shows a window titled "Place" with a close button (X) and a help button (?). Below the title bar, there is a dropdown menu labeled "Area:" with "50 kph area" selected, and two buttons: a green plus sign (+) and a red minus sign (-). The main area contains a table with 4 rows and 3 columns. The first column contains numbers 1, 2, 3, and 4. The second column is labeled "Min" and the third is labeled "Max". Below the table, there are three buttons: "Save", "Reset", and "Close".

	Min	Max
1	0	50
2	51	70
3	71	90
4	91	110



Create a new location.



Delete a location.



Used to create a line. Each line corresponds to a graphic zone.



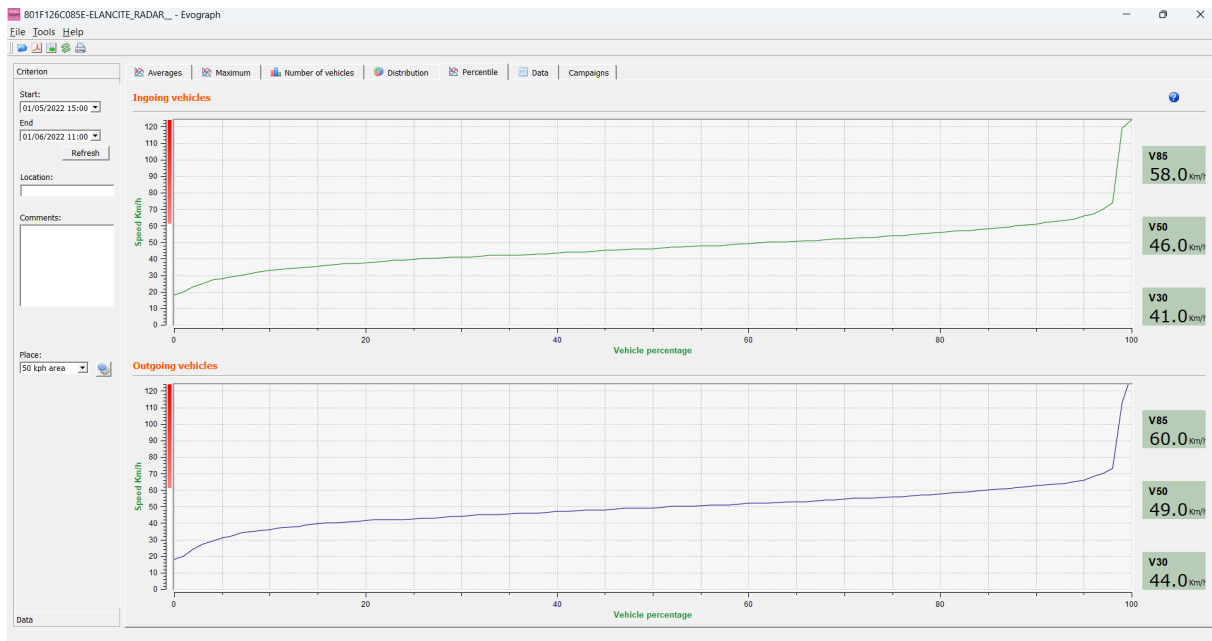
Used to delete a line.

Once the configuration set-up, simply click on "Save". The new locations are now available.

The "Reset" option allows you to restore the initial configuration of the location zones, i.e. only the 20, 30, 50, 70, 80 and 90 km/h zones.

6.3.6 Percentiles

The V85 or the 85th percentile is an indicator frequently used to report the behaviour of drivers. It is the speed respected by 85% of drivers or the speed above which 15% of drivers drive. The V85 gives an idea of the speed dispersion.

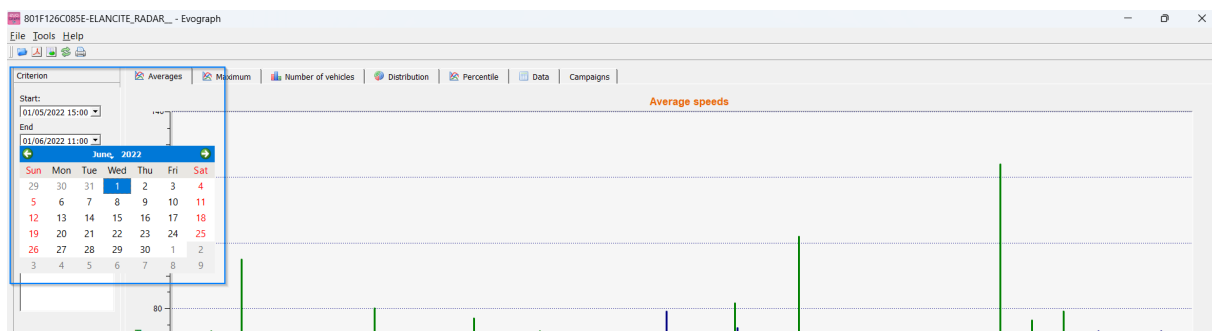


If V85 is close to the average, this indicates that the speeds observed on a road are consistent. If the opposite is noted, this means that a significant proportion of drivers are above the speed limit.

6.4 EVOGRAPH functions

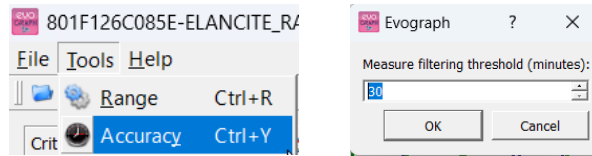
6.4.1 Dates selection

The graphs initially focus on the entire recording period. In order to generate specific data over a period you can select shorter periods on the calendar.




A “zoom” function on the graph also allows you to present the graph over a very specific period of time.

Precision (= Timescale or graphs)



You can select a scale of half an hour or one hour (timestamp).

6.4.2 Printing to a PDF file


The icon , allows you to export graphs in PDF format for storage or printing. The “measuring location” and “comments” fields can be filled in and will appear directly in the printer of your printouts (PDF or paper).



We recommend that you print in PDF format before printing a paper version.

6.4.3 Export to Excel

Statistics in condensed mode

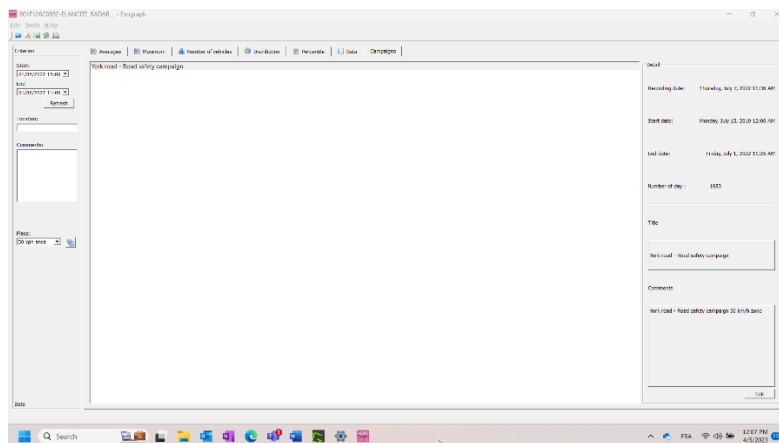
You can export your data to Excel to create personalized graphs or compile data (recording periods) using the icon .

Statistics in high accuracy mode

When your radar speed sign is configured in high accuracy mode, ([section 6.1](#)) the export of data to Excel, to the second, is only available by using the combination of the following keys: CTRL+F1 then CTRL+X. A save window appears and you will be able save the statistics of your radar speed sign in “.CSV” format on your computer.

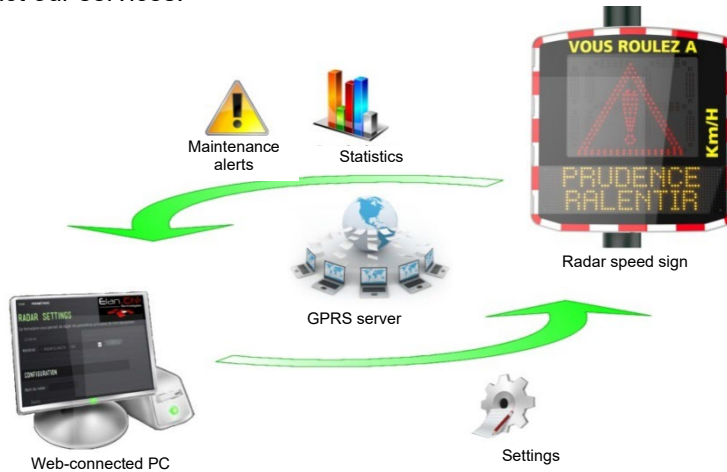
6.4.4 Modify campaign information

It is possible to modify the title and information of a campaign in the “Campaign” tab. In this tab, you can also find the start and end dates of the campaign concerned.



7. CONNECT OPTION

This option uses the mobile internet to transfer the radar speed sign data to our servers (once a day) and allows you to set up your sign, retrieve your statistics, or allow the Elan City technical department to process the data. Some malfunctions can even be identified before failures occur. For each alert, we organise a corrective action as soon as possible. You will also be notified if your device malfunctions, and this, from your office, via the “Evoweb” interface. For more information concerning the connect option, please contact our services.



8. AFTER SALE SERVICE

All information concerning our after-sales service and warranty conditions can be found in the installation manual for your product, available at the following address:

<https://en.elancity.com/customer-area/>